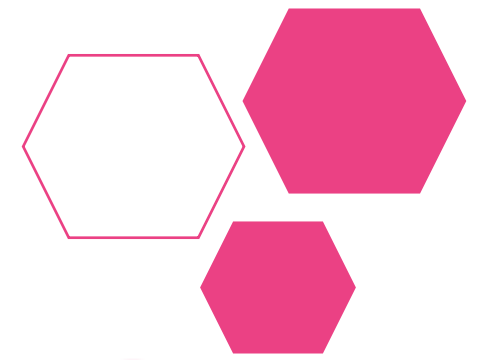




Fostering
Hampshire
Children



Hampshire Hives

Review of the last 12 months and future development

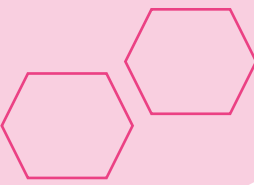


March 2023

 Hampshire
County Council

 Ofsted
Outstanding
Provider





The Hampshire Hive:

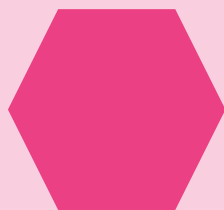
As part of the Modernising Placements Programme, Hampshire piloted a bespoke support network model called the **Hampshire Hive** to provide advice, guidance, practical and emotional support to our Foster Carers and children they care for.

The objectives of the Hampshire Hive are to:

Increase in house
foster carer
households

Improve placement
stability for children

Improve foster carer
retention



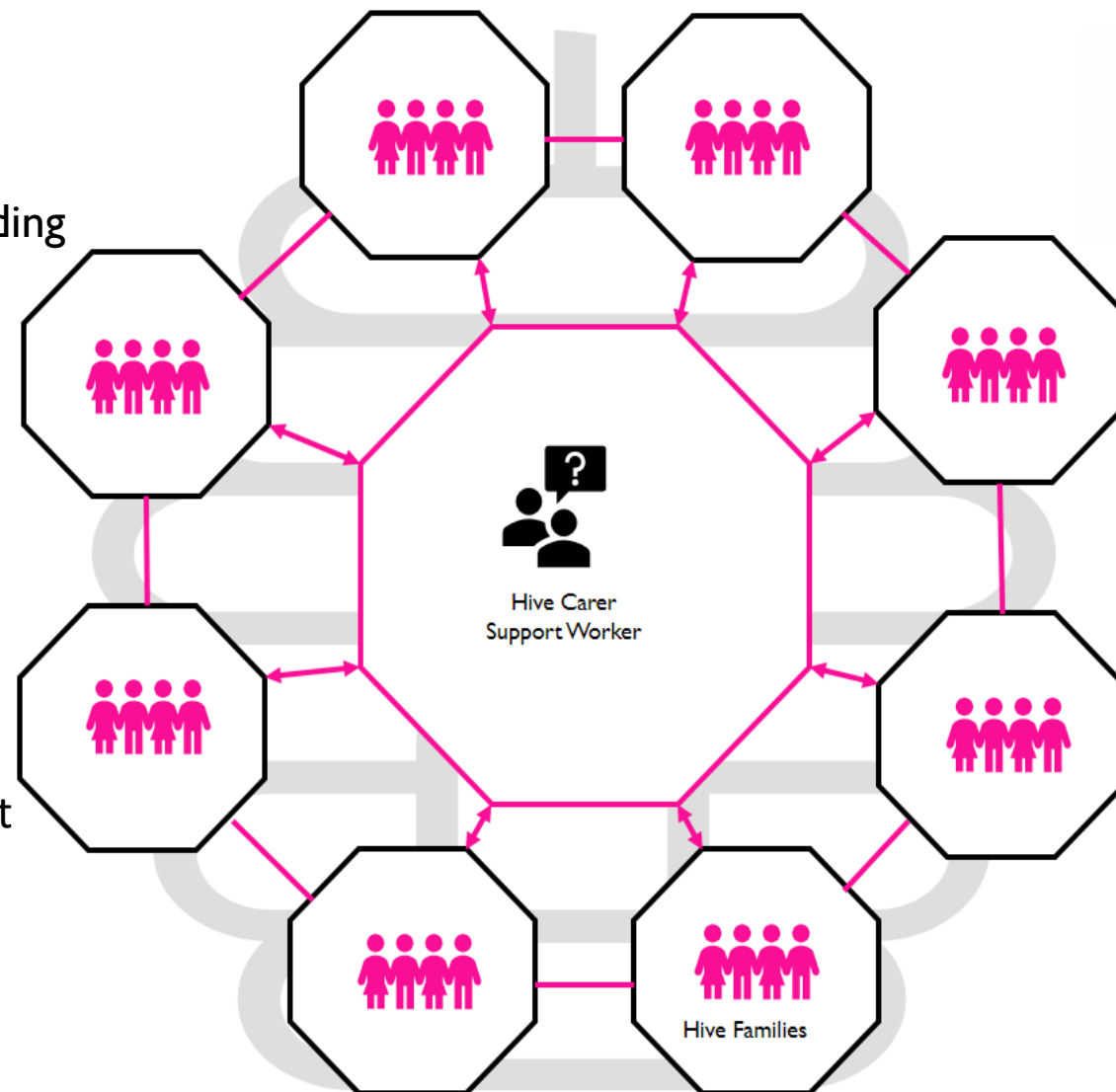
Hive overview



- Each Hive consists of 15-20 fostering families
- A Hive Carer Support Worker (HCSW) co-ordinates and supports Hive Families, providing support and offering advice including out of normal office hours
- They co-ordinate group meetings and whole Hive family events.

The Hive Model was created before the Care review; however, the recommendations are in line with this support offer;

- Mission 1: No young person should leave care without at least two loving relationships, by 2027.
- All local authorities should develop a model of foster carer support based on the principles of Mockingbird.



Where are Hampshire's Hives?

To date we have **16 Hives** have across Hampshire supporting more than **234 fostering families** and over **307 children in care**. In the Hives are also 231 carers own children

That's nearly half of our fostering community choosing to join their local Hive.

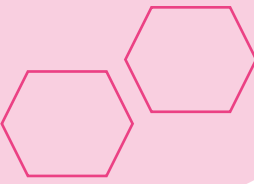
A further 7 hives are planned for April 2023 bring the total to 23 Hives.

We will continue to grow organically to meet expected demand through our recruitment drive and through existing carers wish to join local hives.





How have Hives developed and what's next?



How Hives have developed:

1. HCSW roles are now permanent.
2. Carers in Hives that become Special Guardians or offer Staying Put only can also continue attending family events.

What's next?

1. More Hives are being created, meaning **more children placed with Hampshire Foster Carers will benefit** from Hive Family Events, make friends can access day care and overnight stays
2. **Residential Homes will be linked to Hives**, so children living in residential homes can attend Hive family events.
3. **Care leavers** can choose to continue attending family events.
4. Total capacity for Hives once 7 new hives are up and running is 482 fostering families, the majority of our fostering community.



The impact of Hives, 1 year in...



More carers in Hives report feeling valued



Since joining Hives, carers report feeling more satisfied with support and more confident in caring for Hampshire children



Children in Hives are making friends



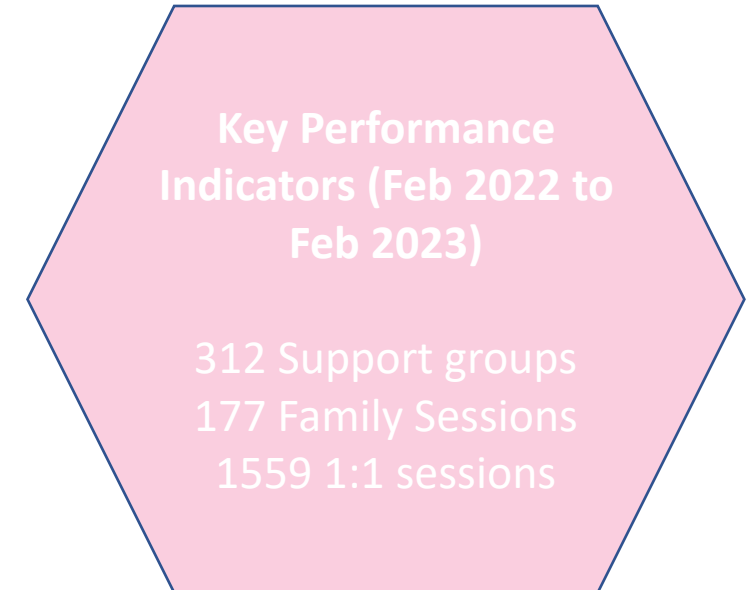
Fewer referrals were made to Placement Commissioning Team, for placement breakdowns, for Hive families



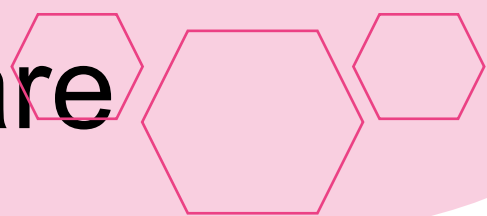
County carer de-registrations are lower in Hives



Carers in Hives are more likely to recommend fostering for Hampshire County Council



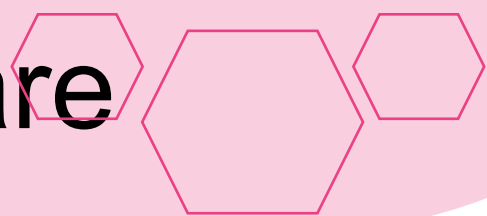
Case Studies – how the Hives are making a difference



A carer was struggling to encourage good school attendance, impacting on the carers work commitments and ultimately a breakdown in placement was inevitable if something didn't change. This was avoided due to the HCSW encouraging the child's attendance at school, spending time with the child completing craft activities in her home. This worked well and soon the majority of children in the Hive were attending this afterschool club which the children love.

Two young children new in care had a number of emergency carers in a short period of time. Although they experienced several moves, the HCSW remained a consistent figure during this time and got to know them very well. He provided day-care, ensuring they did not have more people in their lives unnecessarily and helped share information about the children with carers whilst a long term placement was looked for.

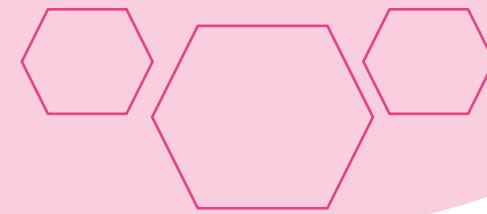
Case Studies – how the Hives are making a difference



A child's placement was breaking down as it was not the best match. Two hives worked together to identify a good match for this child, introductions took place over a weekend when this was less disruptive for school and without emergency carers being required. The child is now settled with her new foster carer.

A young person new into care was due to be cared for by family who were being assessed as connected carers, the HCSW took this child into her care as a bridging placement and oversaw the transitions, no further placement moves, the carers were linked into a hive in their town. This was a huge success and although it has been challenging, the carers have commented they would not have been able to proceed if it wasn't for the support of the two Hive carers.

Views of fostering families



- *This evening I didn't feel alone. I felt supported and helped and I haven't even met you, I can't thank you enough (carer Waterlooville 2 hive)*
- *The Hives are the best thing Childrens Services have done for carers (carer in Ringwood Hive).*
- *Thank you so much for this evening, both boys had a great time, it was lovely to curl up with my girl and watch a movie she has been desperate to watch with me for months (carer in Ringwood hive, time spend with birth child)*
- *She was such a kind, caring, knowledgeable and understanding person and felt that she really cared about her and the wider family, Becky was the best support that she had received from anyone in HCC. She believed that Becky was there for her and loved the fact that she kept checking in on her, especially on a weekend".(carer Winchester Hive)*
- *Being a large family / connected carers we have found the Hive and yourself a great support network. The people we've met so far, have been and are amazing. We hope to meet more of the group in 2023 (Carer Basingstoke Hive)*
- ***"Can we do this all the time? I have made more best friends in the two times i have seen everyone then i have in the two years i have been in Gosport" - 16yr old girl.***



Quotes from our Hive Carer Support Workers

"Fostering is the most satisfying and challenging career I have ever had, and I love it. I was introduced to Therapeutic Parenting when I was struggling with my eldest and it helped me, and the children more than I can say, and I am now a passionate advocate for it."

Orlanda- SW
New Forest
HCSW

"Fostering for me is a journey that I often describe as a roller coaster ride sometimes you can just enjoy the moments , you never really what's round the corner ,when you reach the bumpy bits you have to just hold on really tight and work through ,and most of the time it's FUN !!"

Heidi - Fareham
HCSW

Quotes from our Hive Carer Support Workers



"I am absolutely thrilled to be leading the Ringwood Hive and eager to begin nurturing relationships between children, young people and foster families to build a resilient and compassionate Hive where we can support and encourage each other."

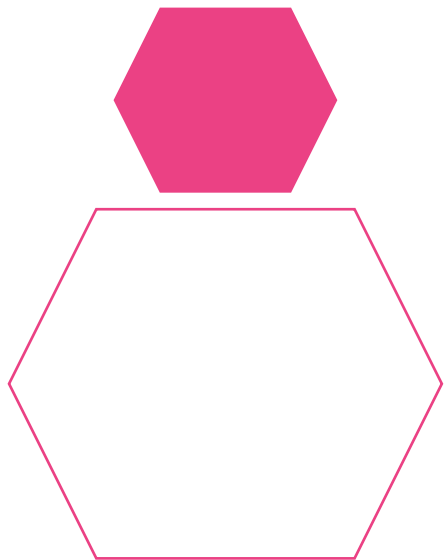
Sian - Ringwood
HCSW

"We have found foster care a very rewarding experience as does our family. Foster care has inspired our granddaughter to want to become a social worker."

Johnny -
Waterlooville
HCSW

"Our Hive in Winchester will be a fantastic opportunity to meet other families, connected carers and foster carer families. It will offer support and friendship so that we can all share the good times and support each other in the tougher times too."

Becki -
Winchester
HCSW



Q&A

